



Norridge School District 80

# Discussion

# Items

October 15, 2024



# Discussion Agenda

## Business



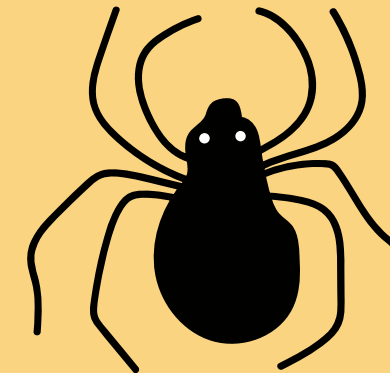
## Policy



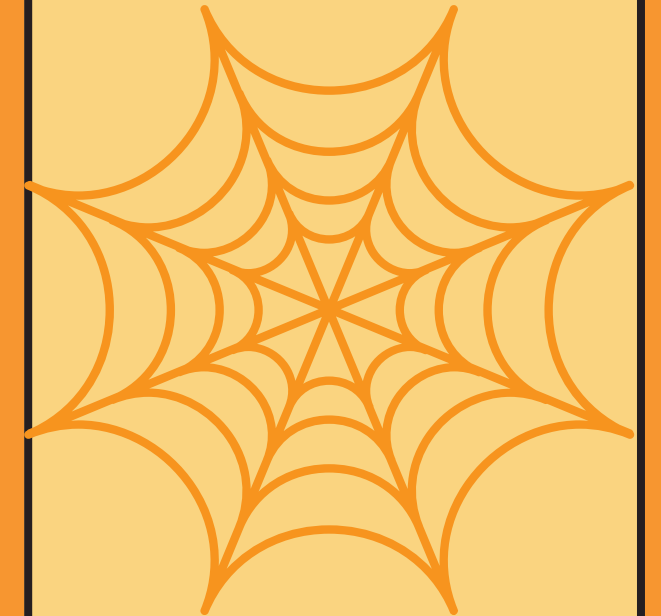
## Finance



## Legislative



## Community



# Business

## Joint Conference

November 22-24

Illinois Association of School  
Boards

Illinois Association of School  
Administrators

Illinois Association of School  
Business Officials

## School Board Elections

3 open positions

Election: April 1, 2025

Nov 12-18: file petitions with Cook County Clerk

Nov 25: last day to file objections

Jan 23: deadline to withdraw

Jan 30: last day to declare as a write-in  
candidate

[Additional information](#)



# Policy

## PRESS 116

Accept changes on first read

Title IX Changes and Updates

## Policy: 100s

Recommendations:

1:10 – no change

1:20 – change to preschool

1:30 – Mission, Vision, Commitments

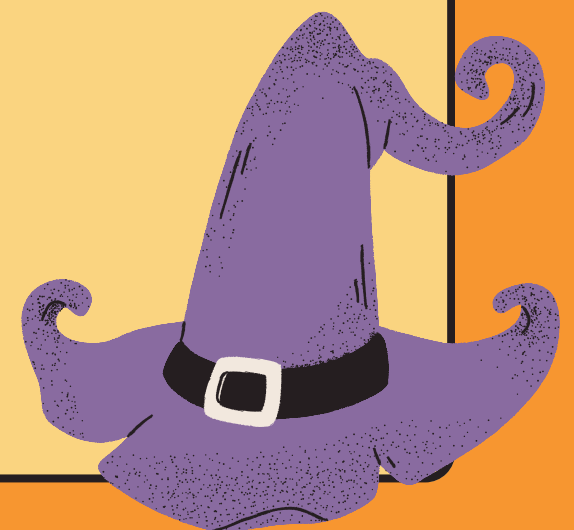
October: first read  
November: second read

## Policy: 200s

Binder: 200 policies for review

November: First Read

December – Second Read



# Finance

## Tax Levy.

Amount of property tax dollars the school district will request to fund the education for the upcoming school year. Amount is tied to CPI – 3.4%

No Truth in Taxation Hearing Needed

November: Tentative Levy

December: Levy Hearing



## Annual Financial Report

Auditors complete yearly

Due to ISBE (West 40) by October 15

Extension to December 15

BoE will need to review and accept

AFR is our financial profile

# Legislative Update



## Cook County Paid Leave Act

Establishes minimum paid leave required for employees working in Cook County

- Requires employers to provide workers with at least one (1) hour of paid leave for every forty (40) hours worked.
- Provides that paid leave can be used for any reason.
- Employers cannot retaliate against workers for using paid leave or for filing complaints.
- Workers are not required to provide their employer with a reason for use of paid leave, find replacement coverage, or provide documentation or certification as proof or in support of using paid leave.
- Workers may choose whether to use paid leave prior to using any other leave provided by the employer or State law.

School District were exempt until January 1, 2025



# Community

- D80 Fall Band Concert – Giles School – October 17
- NSF BINGO Night – Leigh School – October 18
- D80 New Comers Night – Giles School – October 24
- PTA Halloween Party – Leigh School – October 25
- D80 PTA Meeting – Leigh School – November 6





Norridge School District 80

# Discussion

# Items

October 15, 2024

