

Norridge School District 80

Discussion Items

July 16, 2024

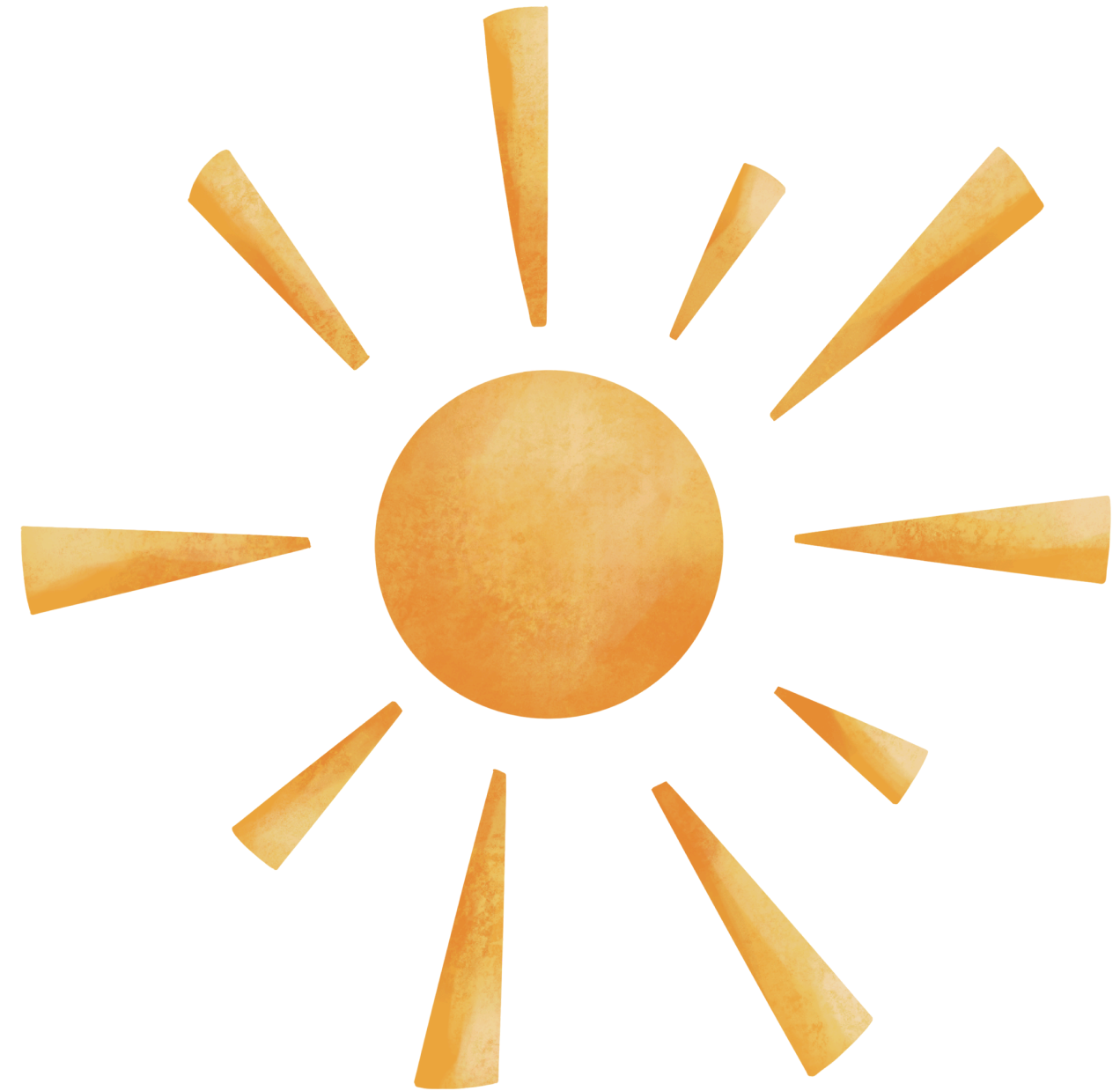
Agenda

District Business

District Policy

Buildings and Grounds

Follow-up and Future



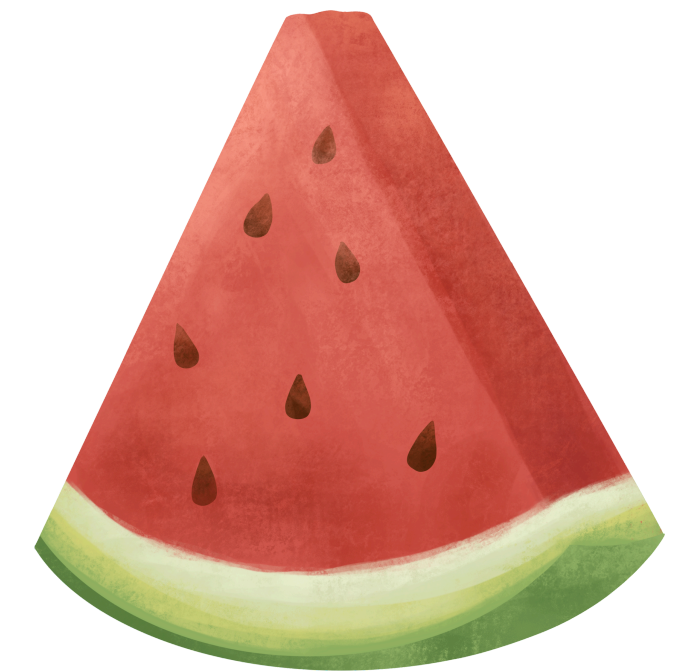
Back to School Events

August 19, 2024 – Leigh Back to School Event

August 24, 2024 – Preschool Community Build

September 5 – Giles Curriculum Event

September 13 – PTA Back to School Event @ Leigh



Building Rental Request

Ridne Slova Ukrainian School

80 students (grades 1st-6th)

Saturdays Hours: TBD

8th grade wing of Giles

Enter through the courtyard

Insurance will be provided, if approved

\$65.00 per classroom per week

Includes cleaning

Requires BOE approval: Consent Item



Lunch Bid for 24-25

Lunch bid process: approved by ISBE.

Lunch cost: \$5.50 per day

Suggested cost for families: \$4.35 per day

New: Gg will employ both servers

Requires BOE approval – Consent item



Registration for 24-25

We are checking all residency forms

Must upload full residency documentation

Form D will always be BLANK



381 returning students have been approved

776 have completed forms without full residency documentation

Registration is not complete until Form K has been approved

Current Enrollment

Preschool: 66 students
(Wait list of out of district students)

Kindergarten: 47 full day students and
17 half day students

New Students: 17 students



Joint Annual Conference

IASA

IASB

IASBO

Hyatt Regency Chicago

November 22-24



District Policy

Press Plus Update 115: First Read

Policy 6.190 – Extra-curricular
fees due before activity

Band, Athletic and Academic
Sports/Clubs

BOE approval in Consent



Buildings and Grounds

Classrooms – Painting, furniture, lights,
removed sinks, intercoms, clocks

Outside maintenance

Leigh Halls – painting and new east floor

Alarm locks in both buildings

Improved signs



Lunch and Fee Waivers Direct Certified

Current District Low Income: 44%

SNAP/TANF – 170 students: waive fees and provide lunch

Medicaid – 259 students: provide lunch only

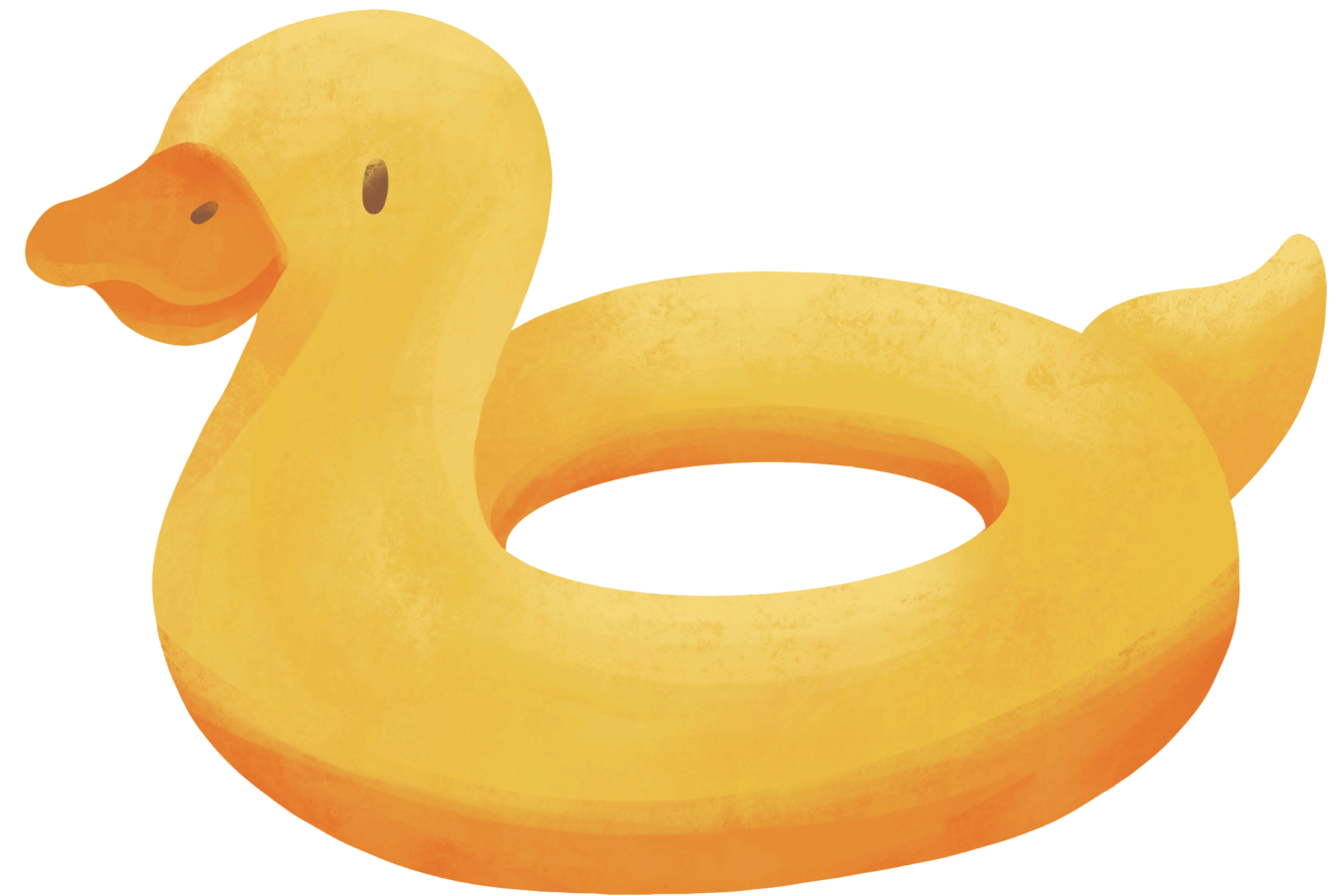
National School Lunch Program: reimbursed for lunch

District is not reimbursed for school fee waivers

Outstanding Fees

Curriculum Fees: \$12,696

Band: \$2034



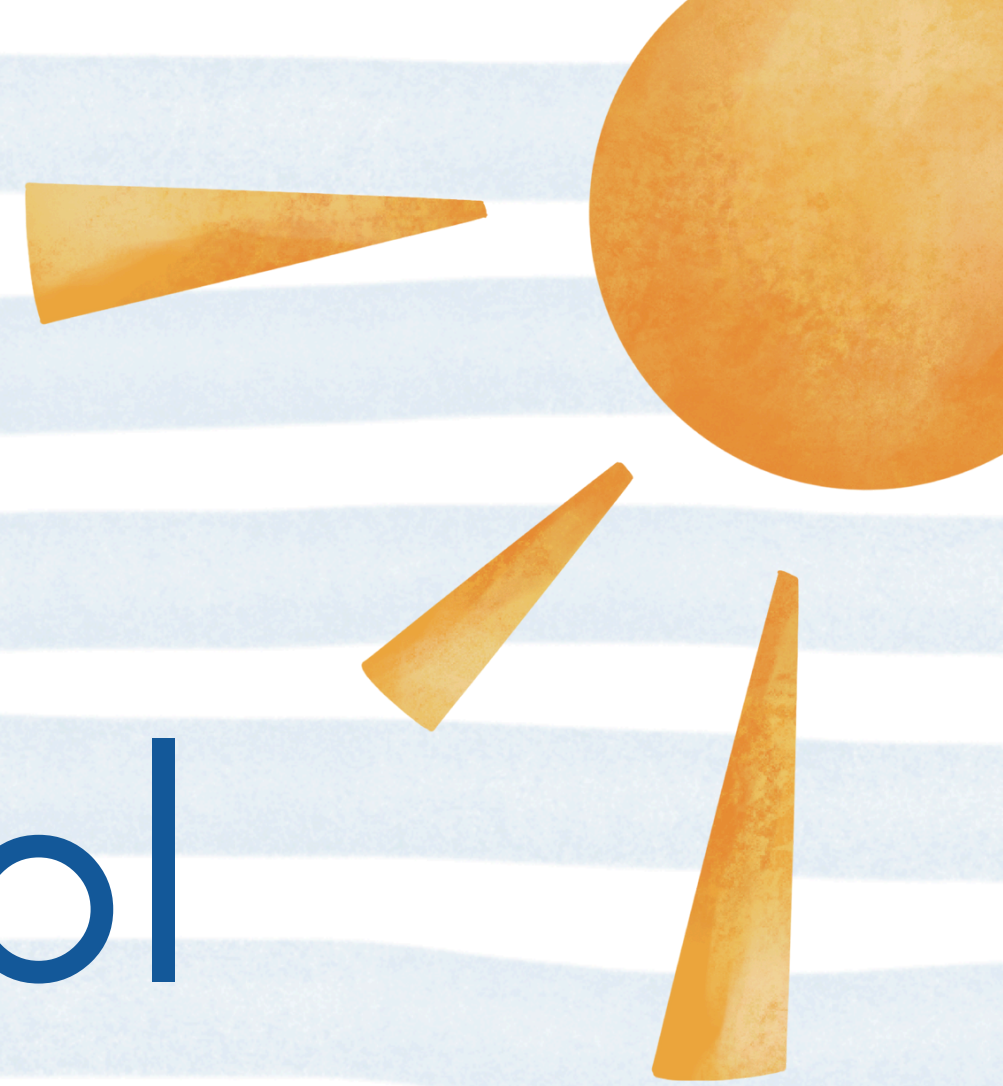
August Meeting

Meet the new staff: 6:30pm on
August 20th

Agenda Items:

- Outplace Facility Agreements
- Tentative Budget
- Additional Staff





Norridge School District 80

Discussion Items

July 16 2024