

The background features several geometric shapes. On the right side, there are large, overlapping triangles in purple and yellow. On the left side, there are smaller geometric shapes, including a dashed semi-circle and a series of connected lines forming a stepped pattern.

# **JAMES GILES SCHOOL**

# **SCHOOL**

# **IMPROVEMENT PLAN**

**2024-2025**

# School Improvement Team



**Bob  
Biedke**  
Giles Principal



**Christine  
Ahrens**  
Asssistant Principal



**Judy  
Figliuolo**  
5th Grade Special Education



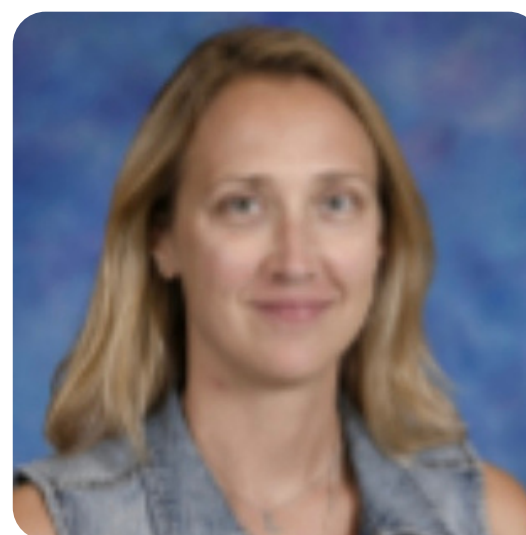
**Steve  
Hovorka**  
7th Grade Science



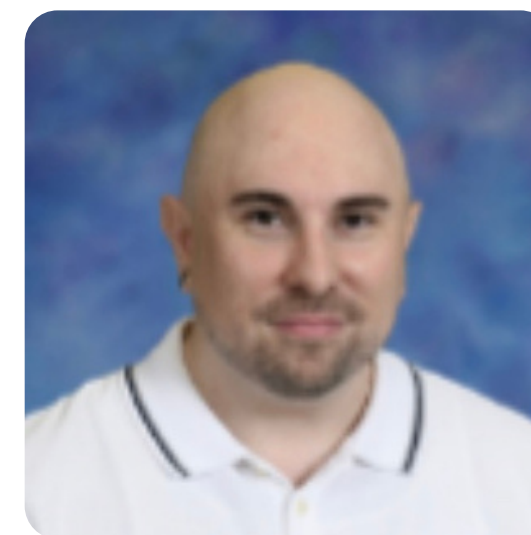
**Annamarie  
Piotrowski**  
8th Grade Social Studies



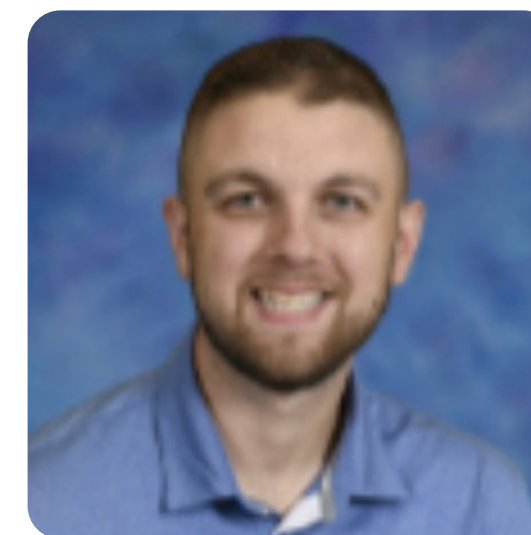
**Todd  
Browder**  
6th Grade ELA



**Sara  
DeVito**  
8th Grade Special Education



**Daniel  
Nickerson**  
7th/8th Grade Spanish



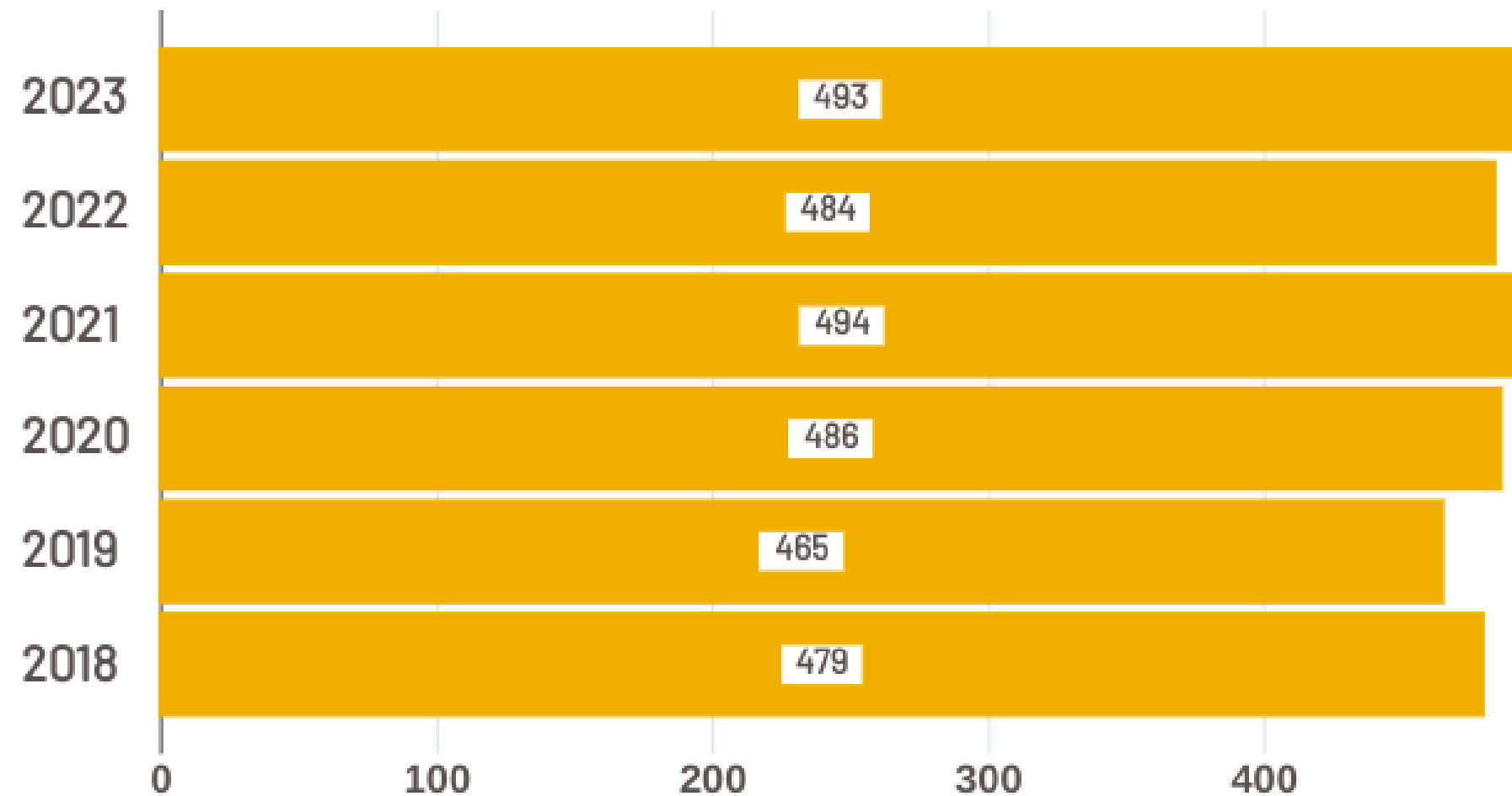
**Anthony  
Coletta**  
5th Grade Social Studies



# Giles School Enrollment

## 2023–2024 SY

- Fifth grade – 115 students
- Sixth Grade – 119 students
- Seventh Grade – 129 students
- Eighth Grade – 130 students



---

## Certified Staff

- 29 certified teachers
- 5 paraprofessionals
- 1 school nurse
- 4 support staff
- 2 building administrators



# Our Students Are *GilesMade*

Giles students earn PBIS points for displaying PRIDE qualities during the school day





# 2023 SCHOOL DATA



**18% ML students**



**8% students with IEPs**



**44% Free & Reduced students**

# School Strengths

01

## **Library Media Center & STEAM Labs**

Over the past few years, Giles School with the support of the Norridge School District 80 Board of Education and the Norridge Schools Foundation has made a significant investment in our learning spaces primarily in our Library Media Center and STEAM Labs.

02

## **Academic Achievement & Acceleration**

Giles School is at or above state and national averages for academic achievement. Students are able to advance within the school in the English and Math departments. In addition, we have partnered with Ridgewood HS to offer advanced placements in ELA, Math and Spanish.

03

## **Parent and Community Involvement**

Parents at Giles School are committed to partnering with staff. All families are offered an opportunity to attend student-led conferences. Giles also engages in many activities with community members and organizations:

- Salvation Army Food Drive and Angel Tree
- Relationships with Norwood Park Township, Norridge Schools Foundation and our PTA.

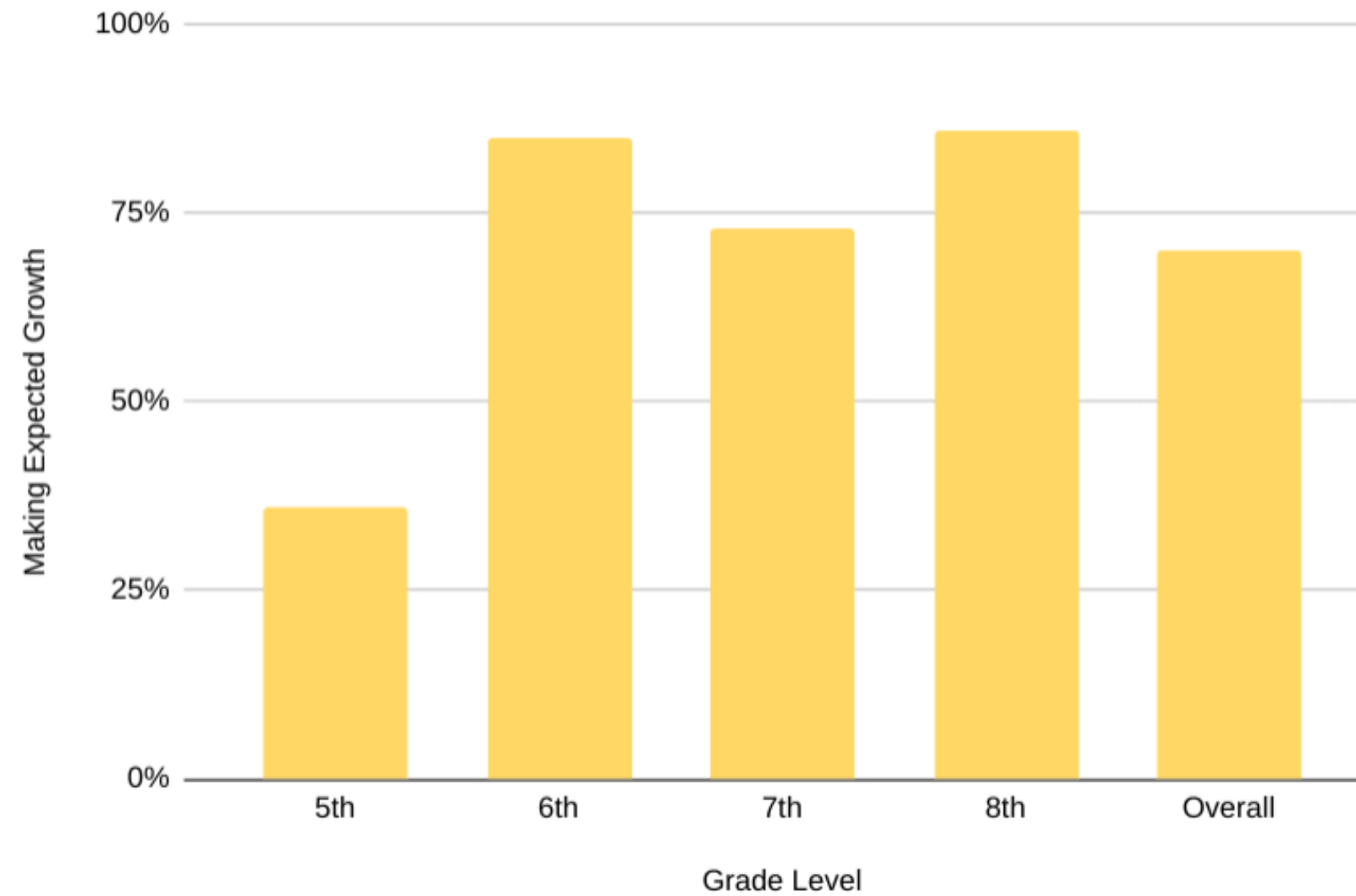
04

## **PRIDE and GilesMade**

As a part of our PBIS program all students learn what it means to show PRIDE and to be GilesMade. Through our PRIDE program we host student assemblies, celebrate school spirit weeks and also utilize a system to encourage positive behavior through PBIS rewards.

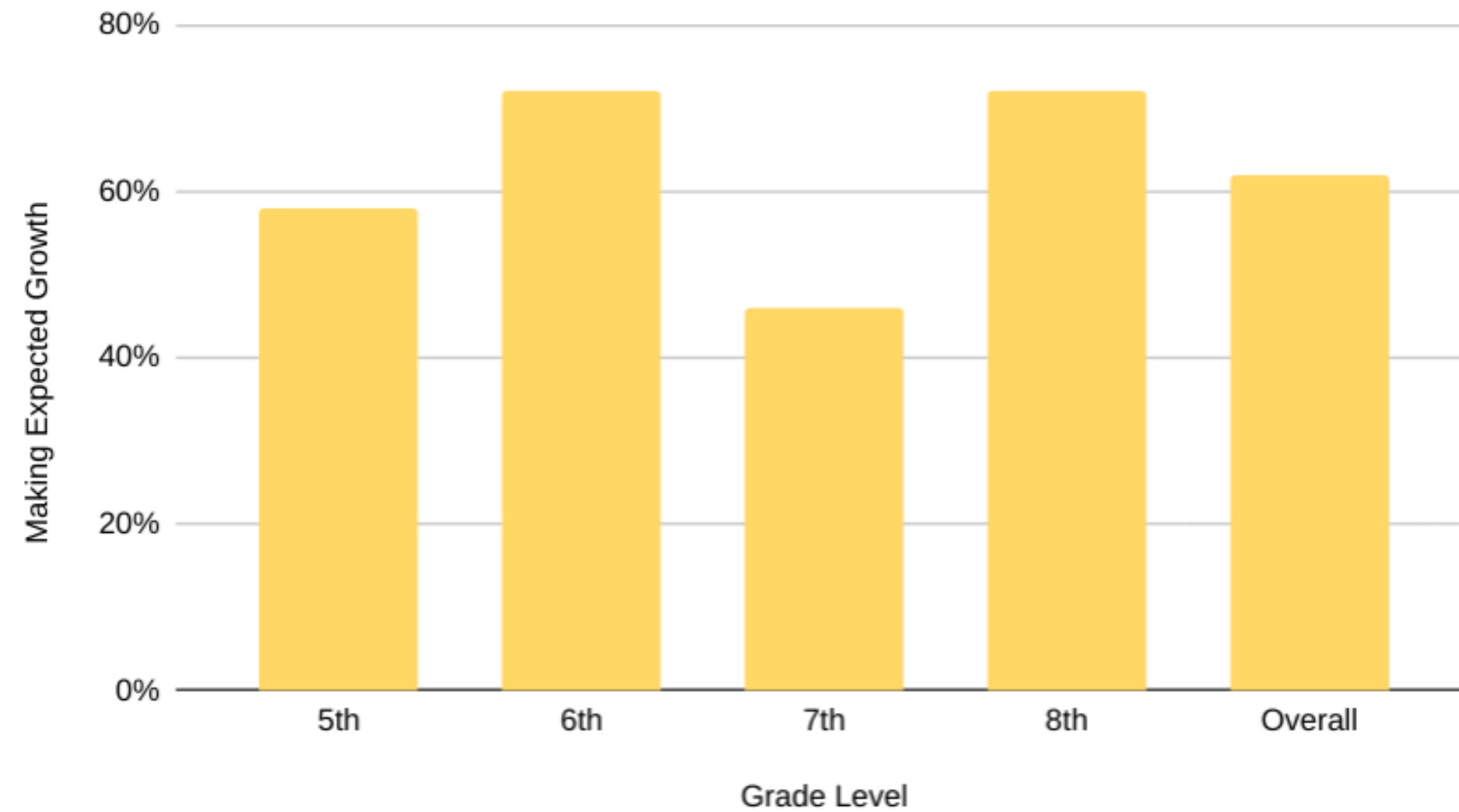
# Expected Gains (Math)

Math Expected Growth (Spring 2022-2023 to Spring 2023-2024)



# Expected Gains (ELA)

Reading Expected Growth (Spring 2022-2023 to Spring 2023-2024)





# Our Goals

## 01 Goal 1: Math Achievement

- 70% of our students will make their individualized growth goal based on iReady Math for grade 5 and NWEA/MAP for grades 6–8 from Spring 23–24 to Spring 24–25.

## 02 Goal 2: ELA Achievement

- 70% of our students will make their individualized growth goal based on iReady Reading for grade 5 and NWEA/MAP for grades 6–8 from Spring 23–24 to Spring 24–25.

## 03 Goal 3: SEB

- Office discipline referrals in school year 2024–2025 will decrease by 10% in comparison to school year 2023–2024.

# Next Steps

## 01 Goal 1: Math Achievement

- Review student universal screening data along with attendance data to strategically schedule academically rigorous classes.
- Engage Math Department Team to facilitate Professional Learning Communities .
- Maintain the Giles School MTSS Committee, who will identify and deliver professional development to staff and review recommendations for Tier II & Tier III students.

## 02 Goal 2: ELA Achievement

- Review student universal screening data along with attendance data to strategically schedule academically rigorous classes.
- Teachers will provide additional data driven support in reading, writing, speaking & listening to increase student achievement.
- Maintain the Giles School MTSS Committee, who will identify and deliver professional development to staff and review recommendations for Tier II & Tier III students.

## 03 Goal 3: SEB

- Develop a program for students who are chronically absent.
- Gen Ed consulting based on MySaebrs and Saebrs data in the areas of Social, Emotional & Academic.
- Teachers and Paraprofessionals will be provided with professional development on behavioral management.
- Continue to follow the Second Step Program in order to ensure that our students are GilesMade.
- Promote positive behaviors by awarding PBIS points and incentives.



# Four Essential Questions

These questions will be used at every Giles PLC meeting to help guide our discussions around instruction and student achievement

**What do students  
need to know and be  
able to do?**

---

**What will we do  
when they haven't  
learned it?**

---

---

**How will we know  
when they've  
learned it?**

---

**What will we do  
when they already  
know it?**

---



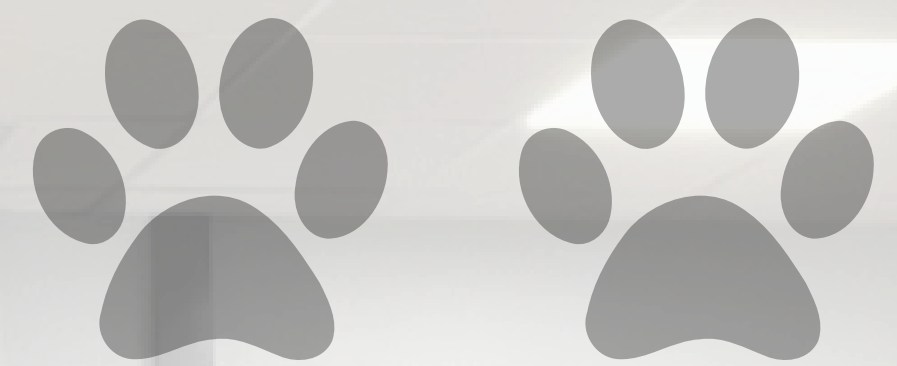
# Reflection, Evaluation, and Refinement

- **The James Giles School Improvement Plan is a working document which will remain at the forefront of our monthly meetings as an ongoing agenda item, throughout the year . We will continue to update the status of our action items which will ensure collective accountability.**
- **Every effort will be made to share this information with the community, with the goal of gaining feedback from school stakeholders.**





WE ARE



GILLESMADE!